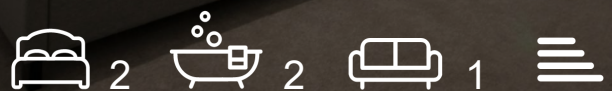




21B Mantella Lofts Pemberton Street

Birmingham, B18 6NY

£1,500 PCM



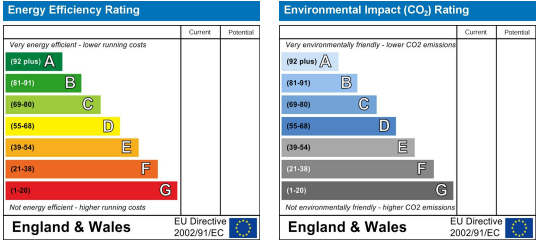
Floor Plan



Area Map



Energy Efficiency Graph



Viewing

Please contact our LV PROPERTY Office on 01212857575 if you wish to arrange a viewing appointment for this property or require further information.

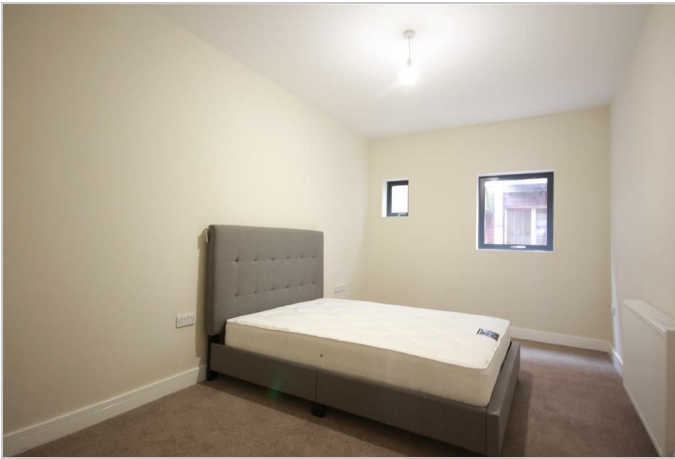
- FURNISHED TO A HIGH STANDARD
- PARKING AVAILABLE
- TWO FAMILY BATHROOMS
- PRIVATE AND QUIET LOCATION
- JEWELLERY QUARTER LOCATION
- AVAILABLE NOW
- MODERN
- LARGE APARTMENT
- TWO DOUBLE BEDROOMS WITH BUILT IN STORAGE



LV PROPERTY is proud to present this exquisite luxury new build apartment, boasting a superior High Quality Finish and captivating High Ceilings throughout.

This stunning residence features an open plan kitchen complete with modern integrated appliances and a convenient breakfast bar. The generously sized dining and living area offer the perfect setting for entertaining guests. Additionally, the master bedroom benefits from an en-suite, while a family bathroom is conveniently situated adjacent to the second double bedroom.

Nestled within the Jewellery Quarter, this gorgeous new development offers residents the best of both worlds – a tranquil retreat just a stone's throw away from the vibrant Birmingham City Centre. With its prime location and access to all the exciting amenities of the Jewellery Quarter and St Paul's Square, this property is sure to appeal to those seeking a taste of country life in the heart of the city.



These particulars, whilst believed to be accurate are set out as a general outline only for guidance and do not constitute any part of an offer or contract. Intending purchasers should not rely on them as statements of representation of fact, but must satisfy themselves by inspection or otherwise as to their accuracy. No person in this firm's employment has the authority to make or give any representation or warranty in respect of the property.



0121 285 7575
www.lvproperty.co.uk

157c Warstone Lane, Jewellery Quarter,
Birmingham, West Midlands, B18 6NZ